

COPYRIGHT © Hangzhou EZVIZ Software Co., Ltd. ALL RIGHTS RESERVED.

Any and all information, including, among others, wordings, pictures, graphs are the properties of Hangzhou EZVIZ Software Co., Ltd. (hereinafter referred to as "EZVIZ"). This user manual (hereinafter referred to as "the Manual") cannot be reproduced, changed, translated, or distributed, partially or wholly, by any means, without the prior written permission of EZVIZ. Unless otherwise stipulated, EZVIZ does not make any warranties, guarantees or representations, express or implied, regarding to the Manual.


About this Manual

The Manual includes instructions for using and managing the product. Pictures, charts, images and all other information hereinafter are for description and explanation only. The information contained in the Manual is subject to change, without notice, due to firmware updates or other reasons. Please find the latest version in the EZVIZ™ website (<http://www.ezviz.com>).

Revision Record

New release – January, 2026

Trademarks Acknowledgement

EZVIZ™, ™, and other EZVIZ's trademarks and logos are the properties of EZVIZ in various jurisdictions. Other trademarks and logos mentioned below are the properties of their respective owners.

Legal Disclaimer

TO THE MAXIMUM EXTENT PERMITTED BY APPLICABLE LAW, THE PRODUCT DESCRIBED, WITH ITS HARDWARE, SOFTWARE AND FIRMWARE, IS PROVIDED "AS IS", WITH ALL FAULTS AND ERRORS, AND EZVIZ MAKES NO WARRANTIES, EXPRESS OR IMPLIED, INCLUDING WITHOUT LIMITATION, MERCHANTABILITY, SATISFACTORY QUALITY, FITNESS FOR A PARTICULAR PURPOSE, AND NON-INFRINGEMENT OF THIRD PARTY. IN NO EVENT WILL EZVIZ, ITS DIRECTORS, OFFICERS, EMPLOYEES, OR AGENTS BE LIABLE TO YOU FOR ANY SPECIAL, CONSEQUENTIAL, INCIDENTAL, OR INDIRECT DAMAGES, INCLUDING, AMONG OTHERS, DAMAGES FOR LOSS OF BUSINESS PROFITS, BUSINESS INTERRUPTION, OR LOSS OF DATA OR DOCUMENTATION, IN CONNECTION WITH THE USE OF THIS PRODUCT, EVEN IF EZVIZ HAS BEEN ADVISED OF THE POSSIBILITY OF SUCH DAMAGES.

TO THE MAXIMUM EXTENT PERMITTED BY APPLICABLE LAW, IN NO EVENT SHALL EZVIZ'S TOTAL LIABILITY FOR ALL DAMAGES EXCEED THE ORIGINAL PURCHASE PRICE OF THE PRODUCT.

EZVIZ DOES NOT UNDERTAKE ANY LIABILITY FOR PERSONAL INJURY OR PROPERTY DAMAGE AS THE RESULT OF PRODUCT INTERRUPTION OR SERVICE TERMINATION CAUSED BY: A) IMPROPER INSTALLATION OR USAGE OTHER THAN AS REQUESTED; B) THE PROTECTION OF NATIONAL OR PUBLIC INTERESTS; C) FORCE MAJEURE; D) YOURSELF OR THE THIRD PARTY, INCLUDING WITHOUT LIMITATION, USING ANY THIRD PARTY'S PRODUCTS, SOFTWARE, APPLICATIONS, AND AMONG OTHERS.

REGARDING TO THE PRODUCT WITH INTERNET ACCESS, THE USE OF PRODUCT SHALL BE WHOLLY AT YOUR OWN RISKS. EZVIZ SHALL NOT TAKE ANY RESPONSIBILITIES FOR ABNORMAL OPERATION, PRIVACY LEAKAGE OR OTHER DAMAGES RESULTING FROM CYBER ATTACK, HACKER ATTACK, VIRUS INSPECTION, OR OTHER INTERNET SECURITY RISKS; HOWEVER, EZVIZ WILL PROVIDE TIMELY TECHNICAL SUPPORT IF REQUIRED. SURVEILLANCE LAWS AND DATA PROTECTION LAWS VARY BY JURISDICTION. PLEASE CHECK ALL RELEVANT LAWS IN YOUR JURISDICTION BEFORE USING THIS PRODUCT IN ORDER TO ENSURE THAT YOUR USE CONFORMS TO THE APPLICABLE LAW. EZVIZ SHALL NOT BE LIABLE IN THE EVENT THAT THIS PRODUCT IS USED WITH ILLEGITIMATE PURPOSES.

IN THE EVENT OF ANY CONFLICTS BETWEEN THE ABOVE AND THE APPLICABLE LAW, THE LATTER PREVAILS.

Table of Contents

Overview	1
1. Package Contents	1
2. Basics	2
Setup	3
1. Get the EZVIZ App	3
2. Power on the Camera	3
3. Add Camera to EZVIZ	4
Camera Installation	4
1. Install a microSD™ Card (Optional)	4
2. Charge the Camera	5
3. Installation Location	6
4. Installation	6
5. Adjust Angle	9
View Your Device	10
1. Live View	10
2. Settings	11
EZVIZ Connect	12
1. Use Amazon Alexa	12
2. Use Google Assistant	13
FAQ	13
Initiatives on the Use of Video Products	14
Appendix	15
1. Rechargeable Lithium ion Battery	15
2. Information for Private Households	15

Overview

1. Package Contents



Camera (x1)



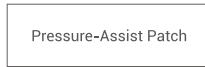
Screw Base (x1)



Pin (x1)



Power Cable (x1)



Pressure-Assist Patch (x2)



Screw Kit (x1)



Foam Sticker (x2)



Metal Plate (x1)



Regulatory Information (x2)



Quick Start Guide (x1)

2. Basics



Name	Description
LED Indicator	● Solid Blue: Camera starting up or being live viewed in the EZVIZ app.
	●●● Fast-flashing Blue: Camera ready for network configuration.
	● ● Slow-flashing Blue: Camera running properly.
	● ● Slow-flashing Red: Network exception.
	●●● Fast-flashing Red: Camera exception. / Battery low.
	●●● Solid Green: Camera fully charged.
	● ● Slow-flashing Green: Camera in charging.



Name	Description
RESET Hole	Use the pin provided to press and hold the RESET hole for 4 seconds to restart and set all parameters to default.
POWER Button	<ul style="list-style-type: none"> Power on: Press and hold for 2 seconds. Power off: Press and hold for 4 seconds.
microSD™ Card Slot	<ul style="list-style-type: none"> Insert a microSD™ card (purchase separately) into the card slot. Initialize the card in the EZVIZ app before using it. Recommended compatibility: Class 10, maximum space 512GB.
Charging Port	For charging the camera.

Setup

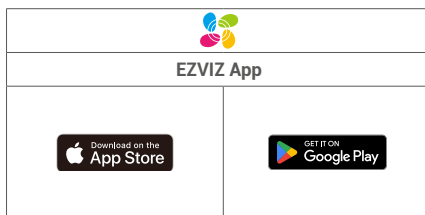
Follow the steps to set your camera:

1. Get the EZVIZ app, and log in to your EZVIZ app account.
2. Power on your camera.
3. Add your camera to your EZVIZ account.

1. Get the EZVIZ App

- i** Before downloading the app:
- If the app is already installed, verify that it is the latest version by checking for updates in your app store.
 - If the app is not installed, follow the steps below to download it.

1. Connect your mobile phone to Wi-Fi (suggested).
2. Download the EZVIZ app by searching "EZVIZ" in the App Store or Google Play™.
3. Register an EZVIZ account and log in to the app.



2. Power on the Camera

Press and hold the POWER button for 2 seconds to power on.



3. Add Camera to EZVIZ

i Please connect your camera to the Wi-Fi to which your mobile phone has been connected.

1. Log in to your account using the EZVIZ app.
2. On the Home screen, tap "+" on the upper-right corner to go to the Scan QR Code page.
3. Scan the QR code on the Quick Start Guide cover or on the body of the camera.



i You can also directly enter the device SN for adding.

4. Follow the EZVIZ app wizard to complete Wi-Fi configuration and add the camera to your EZVIZ account.

Camera Installation

1. Install a microSD™ Card (Optional)

1. Open the waterproof cover on the back of the device, and insert a microSD™ card (purchase separately) into the card slot.



2. Reattach the waterproof cover.

i After installing a microSD™ card, please follow the steps below to initialize the card in the EZVIZ app before using it.

1. In the EZVIZ app, tap "Record List" in the device Settings page to check the microSD™ card status.
2. If the microSD™ card status shows as Uninitialized, tap to initialize it. The status will then change to In Use, allowing videos to be stored.

2. Charge the Camera

- Please do not charge the camera when the temperature exceeds 45°C or falls below 0°C.
- When charging, the camera will be automatically turned on.

Method 1 Power Adapter Charging

For initial use, it is recommended to fully charge the camera with the power adapter.

1. Open the waterproof cover.



2. Connect the camera to a power outlet with a power adapter (DC5V 2A, purchase separately) for charging.

- It is not allowed to charge the camera with power adapter outdoors.
- For disconnection from power supply, unplug the power connector from the device.



3. After charging is complete, ensure the waterproof cover at the charging port is securely sealed to prevent moisture ingress or water damage.

Method 2 Solar Panel Charging

- If you purchased the kit, the solar panel is provided together with the camera; otherwise, the solar panel is purchased separately. For detailed charging operations, please refer to [3w solar panel user manual](#).

If you plan to use solar power for continuous outdoor operation, follow the steps below to charge the camera.

1. Complete the installation. (For detailed operations, please refer to "[Installation](#)").
2. Connect the solar panel's output power cable to the camera's charging port. We hereafter use the wall mounted camera for illustration.



3. Installation Location

Choose a location with a clear, unblocked field of view and with a good wireless signal. Make sure the wall is strong enough to withstand three times the weight of the camera.

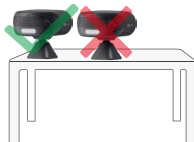
For use with solar panel: install the device beneath it. This placement provides shading to reduce direct sunlight exposure on the device casing, minimizing temperature rise.

Recommended wall mount installation height: 8.2 feet (2.5 meters) above the ground.

Recommended desktop placement installation height: no higher than 5.9 feet (1.8 meters) above the ground.



Avoid direct sunlight



Avoid obstructed views (e.g., center of a desk)



Avoid air vents or drafts (e.g., near windows)



Avoid facing highly reflective surfaces (e.g., mirrors)



Important Notes on Reducing False Alarms:

- Do not install the camera under strong light conditions, including sunshine, bright lamp lights, etc.
- Do not place the camera near any outlets, including the air conditioner vents, humidifier outlets, the heat transfer vents of projectors, etc.
- Do not install the camera at places with strong wind.
- Do not install the camera in front of a mirror.
- Keep the camera at least 1 meter away from any wireless devices, including Wi-Fi routers and phones to avoid wireless interference.

4. Installation

- For a better image quality, please remove the protective film from the lens before installation.
- For drilling, use a 6 mm drill bit and drill to a depth of 30 mm.
- When installing the screw base, ensure the side with the groove is facing upward.

Option 1: With Metal Plate

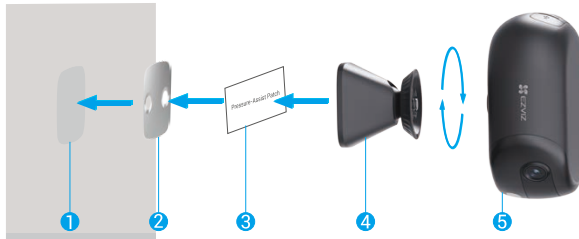
The metal plate supports two mounting methods. Please select the appropriate method based on the surface material of your installation location:

- Foam Sticker Mounting: Ideal for flat, smooth surfaces such as marble or glass.
- Screw Kit Mounting: Ideal for painted walls, latex paint finishes, drywall (gypsum), or other surfaces where foam sticker may lose adhesion or fail to bond securely.

Foam Sticker Mounting

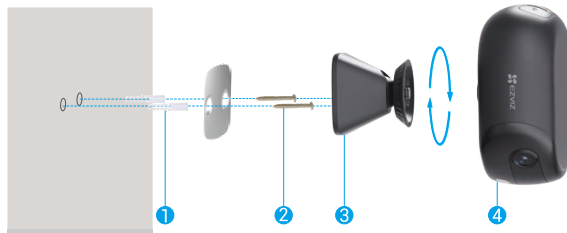
1. Clean the installation area and apply the foam sticker.
 2. Secure the metal plate to the foam sticker and press firmly.
 3. Remove the release paper from the pressure-assist patch and apply it smoothly across both the metal plate and the wall.
- Press down firmly to ensure a tight bond between the foam sticker and the metal plate. Allow the adhesive to cure for 3 hours before removing the pressure-assist patch.
 - To ensure secure adhesion of the metal plate, please strictly follow this step.

4. Magnetically attach the screw base to metal plate.
5. Rotate the device clockwise to the screw base.



Screw Kit Mounting

1. (For cement wall only) Drill screw holes on a clean and flat surface, and insert anchors.
2. Use screws to fix the metal plate.
3. Magnetically attach the screw base to metal plate.
4. Rotate the device clockwise to the screw base.

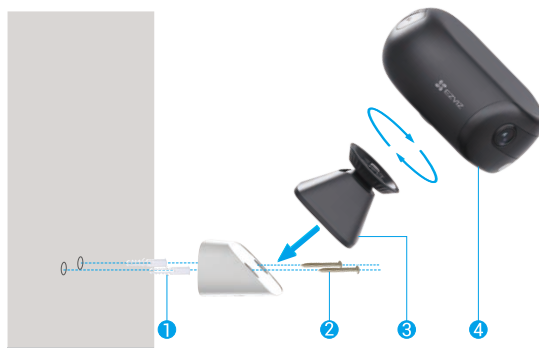


Option 2: With Magnetic Mounting Bracket

i The EZVIZ Magnetic Mounting Bracket (hereafter referred to as the "magnetic bracket") is available in multiple colors. We hereafter use the white version for illustration.

For wall-mounted installations, a magnetic bracket is available to achieve horizontal viewing angles. The magnetic bracket can be directly attached to ferrous metal surfaces. If the surface is non-ferrous, please follow the steps below.

1. (For cement wall only) Drill screw holes on a clean and flat surface, and insert anchors.
2. Use screws to fix the magnetic bracket.
3. Magnetically attach the screw base to the magnetic bracket.
4. Rotate the device clockwise to the screw base.



Option 3: With Wall Mounting Bracket

i Please purchase Wall Mounting Bracket for EZVIZ Battery Camera (Hereafter referred to as the "wall bracket").

For Pole Mount

1. Use a hoop (purchase separately) to fix the wall mounting bracket to a pole.
2. Rotate the device clockwise to the wall bracket.



For Wall Mount

1. (For cement wall only) Drill screw holes on a clean and flat surface, and insert anchors.
2. Use screws to fix the wall bracket.
3. Rotate the device clockwise to the wall bracket.



Option 4: With Standard Interface Bracket

i It is recommended to purchase a standard interface bracket (equipped with a 1/4-inch screw stud) to ensure proper installation and compatibility with the device.

Align the screw hole at the bottom of the device with the 1/4-inch screw stud on the standard interface bracket, then rotate clockwise to tighten.



Option 5: Desktop Placement

1. Rotate the device clockwise to the screw base.
2. Place the assembled device on a stable, flat surface.

i For an optimal image quality and user experience, please position it near the edge of the desk and ensure the area in front of the device lens is clear of obstructions.



5. Adjust Angle

1. After the installation is finished, to achieve a good monitoring, you can adjust the camera's lens angle by viewing the real-time preview screen on the EZVIZ app.



2. Keep the lens level for optimal monitoring coverage.

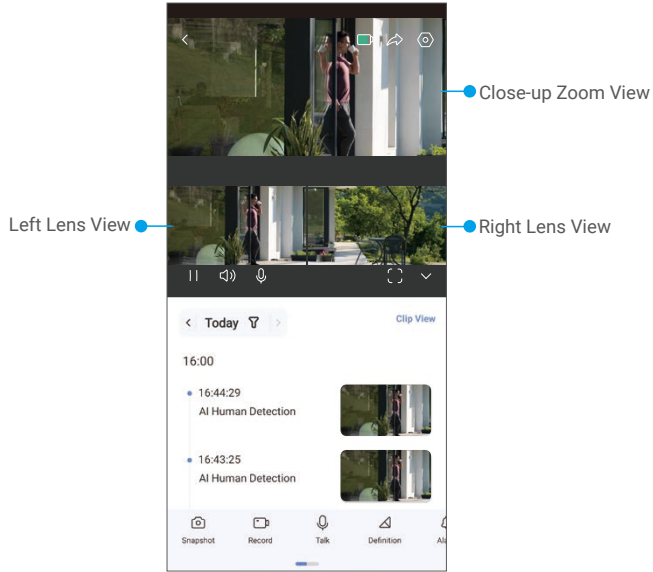


View Your Device





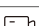







 The app interface may change due to version update.

1. Live View

When you launch the EZVIZ app, the device page displays as shown below. You can view and listen to a live feed, take snapshots or recordings, and choose video definition as needed.



 Swipe left and right across the screen to see more icons.

Icon	Description
	Battery. View the battery remaining capacity.
	Share. Share your device with anyone you want.
	Settings. View or change the device settings.
	Snapshot. Take a snapshot.
	Record. Manually start/stop recording.
	Talk. Tap to talk with the people in front of the device.
	Definition. Tap to select a video resolution.
	Alarm. Tap the icon, and the device will make sounds and flash to deter intruders.
	Nearby Device. Tap to select available nearby devices for multi-screen live view.
	PIP (Picture-in-Picture). Tap to watch the video over other apps.
	Tip. Tap to see more information about the device.
	Rearrange. Rearrange the sequence of all the functions above.

2. Settings

In the settings page, you can set the parameters of the device.

Parameter	Description
Name	View or tap to customize the name of your device here.
Battery	View the battery level and select a working mode for your device.
Intelligent Detection	You can select between different detection types for your device.
Message Notification	You can manage the device message and EZVIZ app notification.
Audio Settings	You can set audio and device voice prompt here.
Image Settings	You can set relevant image parameters for your device.
Light Settings	You can set relevant light parameters for your device.
Record List	You can select between different recording types for your device and see the microSD™ card status.
Privacy Settings	You can encrypt your videos with encryption password and customize the privacy area.
Network Settings	You can see the connection status and configure the Wi-Fi network.
Device Information	You can see the device information here, including the user guide.
EZVIZ Cloud	You can subscribe and manage the cloud storage.
Share Device	You can share the device to your family members or guests.
Delete Device	Tap to delete the camera from EZVIZ app.

1. Use Amazon Alexa

These instructions will enable you to control your EZVIZ devices with Amazon Alexa. If you run into any difficulties during the process, please refer to Troubleshooting.

Before you start, make sure that:

1. EZVIZ devices are connected to the EZVIZ app.
2. In the EZVIZ app, turn off the "Video Encryption" and turn on the "Audio" in the Device Settings page.
3. You have an Alexa-enabled device (i.e Echo Spot, Echo-Show, All-new Echo-Show, Fire TV (all generations), Fire TV stick (second generation only), or Fire TV Edition smart TVs).
4. The Amazon Alexa app is already installed on your smart device, and you have created an account.


To Control EZVIZ devices with Amazon Alexa:

1. Open the Alexa app and select "Skills and Games" from the menu.
2. On the Skills and Games screen, search for "EZVIZ", and you will find "EZVIZ" skills.
3. Select your EZVIZ device's skill, then tap "ENABLE TO USE".
4. Enter your EZVIZ username and password, and tap "Sign in".
5. Tap the Authorize button to authorize Alexa to access your EZVIZ account, so that Alexa can control your EZVIZ devices.
6. You will see "EZVIZ has been successfully linked", then tap "DISCOVER DEVICES" to allow Alexa to discover all your EZVIZ devices.
7. Go back to Alexa app menu and select "Devices", and under devices you will see all your EZVIZ devices.

Voice Command

Discover a new smart device via the "Smart Home" menu in the Alexa app or the Alexa Voice Control function.

Once the device is found, you can control it with your voice. Speak simple commands to Alexa.

-  Your device's name for example: "show xxxx camera," can be changed in the EZVIZ app. Every time you change the name of the device, you will need to discover the device again to update the name.

Troubleshooting

What do I do if Alexa fails to discover my device?

Check if there are any Internet connecting problems.

Try to reboot the smart device and re-discover the device on Alexa.

Why does the device's status show "Offline" on Alexa?

Your wireless connection might have been disconnected. Reboot the smart device and re-discover on Alexa.

Internet access on your router could be unavailable. Check if your router is connected to the Internet and try again.

-  For details about countries that support the using of Amazon Alexa, see its official website.

2. Use Google Assistant

With the Google Assistant, you can activate your EZVIZ device and watch live by speaking Google Assistant voice commands.

The following devices and apps are required:

1. A functional EZVIZ app.
2. In the EZVIZ app, turn off the "Video Encryption" and turn on the "Audio" in the Device Settings page.
3. A TV with functional Chromecast connecting to it.
4. The Google Assistant app on your phone.

To get started, follow the steps below:

1. Set up the EZVIZ device and make sure it works properly on the app.
2. Download the Google Home app from the App Store or Google Play™ and log into your Google account.
3. On the Myhome screen, tap "+" on the upper-left corner, and select "Set up device" from the menu list to go to the Set up page.
4. Tap "Works with Google", and search for "EZVIZ", where you will find "EZVIZ" skills.
5. Enter your EZVIZ username and password, and tap "Sign in".
6. Tap the Authorize button to authorize Google to access your EZVIZ account, so that Google can control your EZVIZ devices.
7. Tap "Return to app".
8. Follow the above steps to complete the authorization. When synchronization is completed, EZVIZ service will be listed under your list of services. To see a list of compatible devices under your EZVIZ account, tap on the EZVIZ service icon.
9. Now try some commands. Use the name of the camera that you created when you set up the system.

Users can manage devices as a single entity or in a group. Adding devices to a room allows users to control a group of devices at the same time using one command.

See the link for more information:

<https://support.google.com/googlehome/answer/7029485?co=GENIE.Platform%3DAndroid&hl=en>

FAQ

- Q: If the camera is offline on the app, will the video recording be continued?
- A: If the camera is powered on but disconnect to the Internet, then local recording will continue but cloud recording will stop. If the camera is powered off, both video recordings will stop.
- Q: Why the alarm is triggered when nobody in the image?
- A: Adjust the alarm sensitivity to a lower value. Please notice that vehicle and animals are also the trigger source.

 For additional information about the device, please refer to www.ezviz.com/eu.

Initiatives on the Use of Video Products

Dear Valued EZVIZ Users,

Technology affects every aspect of our life. As a forward-looking tech company, we are increasingly aware of the role technology plays in improving efficiency and quality of our life. At the same time, we are also aware of the potential harm of its improper usage. For example, video products can record real, complete and clear images, therefore they hold great values in representing facts. Nevertheless, improper distribution, use and/or processing of video records may infringe on the privacy, legitimate rights and interests of others.

Committed to innovating technology for the good, we at EZVIZ hereby earnestly advocate that every user shall use video products properly and responsibly, thus to collectively create a positive environment where all related practices and usage comply with applicable laws and regulations, respect individuals' interests and rights, and promote social morality.

Here are EZVIZ's initiatives that we'd appreciate your attention:

1. Each individual possesses a reasonable expectation of privacy, and the use of video products should not be in conflict with such reasonable expectation. Therefore, a warning notice which clarifies the monitoring range should be displayed in a reasonable and effective manner, when installing video products in public areas. For non-public areas, the rights and interests of people involved shall be evaluated thoughtfully, including but not limited to, installing video products only after obtaining the consent of the stakeholders, and not installing highly-invisible video products without other's knowledge.
2. Video products objectively records footage of real activities within specific time and space. Users shall reasonably identify the people and rights involved in this scope in advance, to avoid any infringement of portrait, privacy or other legal rights of others while protecting themselves through video products. Notably, if you choose to enable the audio recording function on your camera, it will capture sounds, including conversations, within the monitoring range. We highly recommend a comprehensive assessment on the potential sound sources in the monitoring range, so as to fully understand the necessity and the reasonableness before you turn on the audio recording function.
3. Video products in use will consistently generate audio or visual data from real scenes-possibly including biometric information such as facial images-based on the user's selection of product features. Such data can be used or processed to use. Video products are only technological tools that do not and cannot humanly practice legal and moral standards to guide lawful and proper use of data. It is the methods and purposes of the people who control and use the generated data that make a difference. Therefore, data controllers shall not only strictly abide by applicable laws and regulations, but also fully respect non-obligatory rules including international conventions, moral standards, cultural norms, public order and local customs. Furthermore, we should always prioritize the protection of privacy and portrait rights, and other reasonable interests.
4. The video data continuously generated by video products carries the rights, values and other demands of various stakeholders. Thus, it is extremely crucial to ensure data security and shield the products from malicious intrusions. Every user and data controller shall, undertake all reasonable and necessary measures to maximize product and data security, avoiding data leakage, improper disclosure or misuse, including but not limited to, setting up access control, selecting a suitable network environment where video products are connected, establishing and constantly optimizing network security.
5. Video products have made great contributions to enhance the safety of our society, and we believe that they will continue to play a positive role in various aspects of our daily life. Any attempt to abuse these products to violate human rights or engage in unlawful activities contradicts the very essence of the value in tech innovation and product development. We encourage every user to establish your own methods and rules to evaluate and monitor the use of video products, so as to ensure that these products are always used properly, thoughtfully and with goodwill.

1. Rechargeable Lithium ion Battery

1. The battery type of the device: Portable battery.
2. The battery of this device is non-removable, which is risky to remove.

Component Parts	Hazardous Ingredients (Chemical Name)	CAS No.	Concentration Ranges	Chemical Formula
Anode	Lithium Manganese Nickel and Cobalt Oxide	346417-97-8	36.3%	$\text{LiNi}_x\text{Co}_y\text{Mn}_{1-x-y}\text{O}_2$
	Polyvinylidene Fluoride(PVDF)	24937-79-9	0.48%	$(\text{C}_2\text{H}_2\text{F}_2)_n$
Cathode	Graphite	7782-42-5	19.38%	C
	Styrene-Butadiene Rubber(SBR)	9003-55-8	0.27%	$\text{C}_{12}\text{H}_{14}$
	Sodium carboxymethyl cellulose	9004-32-4	0.22%	$[\text{C}_6\text{H}_7\text{O}_2(\text{OH})_2\text{OCH}_2\text{COONa}]_n$
	Nickel	7440-02-0	0.33%	Ni
AL-foil	Aluminium	7429-90-5	2.68%	Al
Cu-foil	Copper	7440-50-8	6.66%	Cu
Electrolyte	Lithium Hexafluorophosphate	21324-40-3	1.79%	LiPF_6
	Ethylene Carbonate(EC)	96-49-1	2.8%	$\text{C}_3\text{H}_4\text{O}_3$
Separator	Polyethylene(PE)	9002-88-4	2%	$(\text{C}_2\text{H}_4)_n$
PET film	Polyethylene terephthalate(PET)	25038-59-9	0.9%	$\text{C}_{10}\text{H}_{12}\text{O}_6$
Cell case	Fe	7439-89-6	17%	Fe
Others	Others	/	9.19%	/

2. Information for Private Households

1. Separate collection of waste equipment: Electrical and electronic equipment that has become waste is referred to as waste equipment. Owners of waste equipment must dispose of it separately from unsorted municipal waste. In particular, waste equipment does not belong in household waste, but in special collection and return systems.
2. Batteries and rechargeable batteries as well as lamps: Owners of waste equipment shall, as a rule, separate waste batteries and rechargeable batteries that are not enclosed in the waste equipment, which can be removed from the waste equipment without being destroyed, from the waste equipment before handing them in at a collection point. This does not apply if waste equipment is prepared for reuse with the participation of a public waste management authority.
3. Options for returning waste equipment: Owners of waste equipment from private households can return it free of charge to the collection points of the public waste management authorities or to the take-back points set up by manufacturers or distributors within the meaning of the Electrical and Electronics Equipment Law. Stores with a sales area of at least 400 m² for electrical and electronic equipment and those grocery stores with a total sales area of at least 800 m² that offer electrical and electronic equipment several times a year or on a permanent basis and make it available in the market are required to take it back. This also applies in the case of distribution using means of distance communication, if the storage and shipping areas for electrical and electronic equipment are at least 400 m² or the total storage and shipping areas are at least 800 m². Distributors shall, in principle, ensure take-back by providing suitable return facilities at a reasonable distance from the respective end user. The possibility of returning waste equipment free of charge exists for distributors who are obliged to take it back, among other things, if a new similar device that essentially fulfills the same functions is delivered to an end user.
4. Privacy Notice: Waste equipment often contains sensitive personal data. This applies in particular to devices of information and telecommunications technology such as computers and smartphones. In your own interest, please note that each end user is responsible for deleting the data on the waste equipment to be disposed of.
5. Meaning of the symbol "crossed-out wheelee bin": The symbol of a crossed-out wheelee bin regularly depicted on electrical and electronic equipment indicates that the respective device is to be collected separately from unsorted municipal waste at the end of its service life.